

# Global Macro Segregated Portfolio • Fact Sheet



January 2018

www.globalmacrospc.com

## Fund Performance as at Valuation Date 29th December 2017

Segregated Portfolio	Start Date	Share Price	1 Month	3 Months	6 Months	9 Months	12 Months	Since Launch
USD Global Macro	01/02/2011	66.1727	-27.11%	-31.08%	-34.60%	-46.20%	-49.60%	-33.83%

## Investment Strategy

The Global Macro Segregated Portfolio ("Global Macro") is one of a number of investment opportunities that is brought to you by Sovereign High Security Fund, an international regulated mutual fund that was launched in 2004 to provide investors with a series of innovative investment opportunities to achieve long term capital growth.

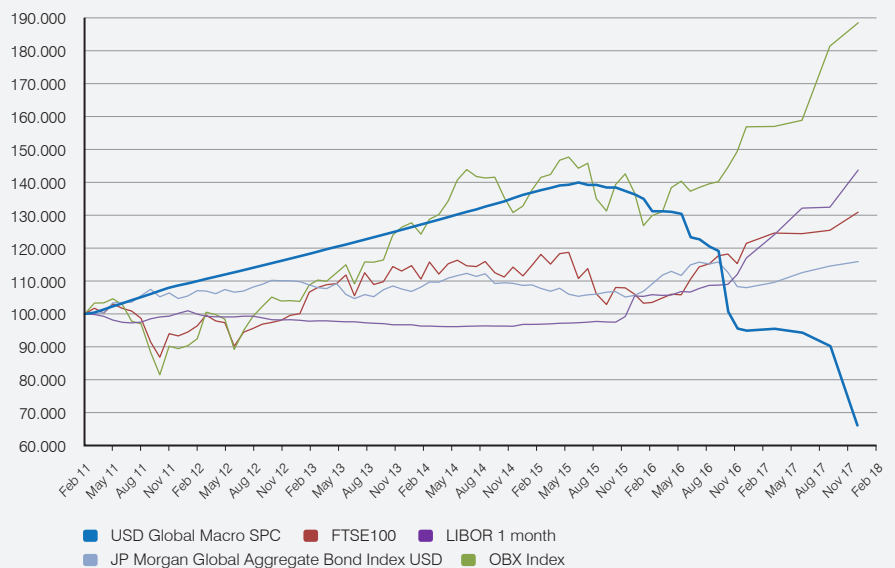
The investment management team of Global Macro aims to achieve a balanced portfolio of assets by placing a blend of non-correlated investments in regulated mutual funds. There is particular emphasis on investment in the UK Residential Property & Strategic Investment Land sector and also U.S. Insurance Linked Securities where medium to long term gains are expected to be achieved due to their prevailing weakness in current pricing.

The investment management team may also consider other asset classes where similar gains are expected to be achieved due to inherent market or pricing weaknesses, with the potential to strengthen over time. The strategy is broadly based on analysis of interest rate trends, movements in the general flow of funds, government policies and other broad systemic factors.

A key component of the portfolio's strategy is the preservation of liquidity with a target asset allocation to be held in cash or near cash assets. By doing so the investment management team are able to make relatively quick adjustments or changes to the weighting of the portfolio with the objective of taking advantage of short term market trends.

## Performance Graph

Source: 29th December 2017 Bloomberg

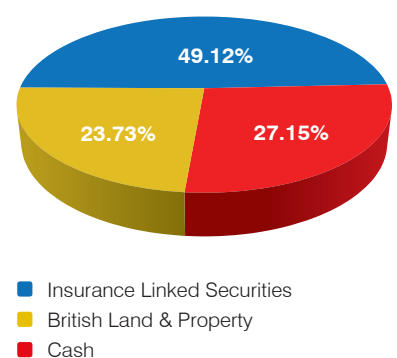


## Key Features

- No initial charges
- 100% allocation on day one
- Not stock market related
- Diversified investment strategy
- 1.5% annual management charge
- Minimum investment of \$50,000
- Regulated Mutual Fund
- Available in USD

**Sovereign High Security Fund SPC**  
**Net Asset Value:** USD 8,906,786.72

## Target Asset Allocation



## Dealing Codes

Segregated Portfolio	BLOOMBERG	ISIN	SEDOL	VALOREN
USD Global Macro	<a href="#">SHSUVLS:KY</a>	KYG8296W2077	B3WLQY7	11826916



Sovereign PLC  
 Cayman Financial Centre  
 P.O. Box 2510  
 Grand Cayman KY1-1104  
 Cayman Islands

info@sovereignplc.com  
 www.sovereignplc.com

**Sovereign**

# Global Macro Segregated Portfolio • Fact Sheet



## Global Macro Share Price History

Year	Jan	Feb	Mar	Apr	May	Jun	Jul	Aug	Sep	Oct	Nov	Dec	Cumulative	Annualised
2017	-	-	96.0158	-	-	94.8415	-	-	90.7878	-	-	66.1727	-33.83%	-5.79%
	-	-	0.56%	-	-	-1.22%	-	-	-4.27%	-	-	-27.11%		
2016	135.1852	131.4433	131.4525	131.3004	130.6947	123.5960	122.9871	120.7761	119.521	101.1772	96.0992	95.4764	-4.52%	-0.78%
	-0.99%	-2.77%	0.01%	-0.12%	-0.46%	-5.43%	-0.49%	-1.80%	-1.04%	-15.35%	-5.02%	-0.65%		
2015	137.0994	137.8534	138.5427	139.2770	139.4859	140.1694	139.3974	139.4113	138.6425	138.6352	137.5600	136.5412	36.54%	6.54%
	0.51%	0.55%	0.50%	0.53%	0.15%	0.49%	-0.55%	0.01%	-0.55%	-0.01%	-0.78%	-0.74%		
2014	127.4001	128.1645	128.9335	129.7071	130.4853	131.2683	132.0559	132.8482	133.6453	134.4472	135.3883	136.4037	36.40%	8.25%
	0.60%	0.60%	0.60%	0.60%	0.60%	0.60%	0.60%	0.60%	0.60%	0.60%	0.70%	0.75%		
2013	118.5752	119.2866	120.0024	120.7224	121.4467	122.1754	122.9085	123.6459	124.3878	125.1341	125.8850	126.6402	26.64%	8.43%
	0.60%	0.60%	0.60%	0.60%	0.60%	0.60%	0.60%	0.60%	0.60%	0.60%	0.60%	0.60%		
2012	110.3615	111.0237	111.6898	112.3600	113.0342	113.7124	114.3947	115.0811	115.7716	116.4662	117.1650	117.8680	17.87%	8.96%
	0.60%	0.60%	0.60%	0.60%	0.60%	0.60%	0.60%	0.60%	0.60%	0.60%	0.60%	0.60%		
2011		100.9000	101.8081	102.7244	103.6489	104.5817	105.5227	106.4729	107.4318	108.3984	109.0488	109.7032	9.70%	10.63%
		0.90%	0.90%	0.90%	0.90%	0.90%	0.90%	0.90%	0.90%	0.90%	0.60%	0.60%		

## Important Information for Professional Advisors Only

This document is issued and distributed by Managing Partners Limited ("MPL"), other than in the United Kingdom ("UK") where it is distributed by Managing Partners Capital Limited ("MPC") to institutional and professional investors only. Please see below for circulation restrictions in the UK and the Cayman Islands.

MPL is the manager of the Sovereign High Security Fund SPC (the "Fund") which is an exempted company incorporated in the Cayman Islands with limited liability. The Fund is registered with Cayman Island Monetary Authority ("CIMA") as a mutual fund under section 4(3) of the Mutual Funds Law of the Cayman Islands (7996 <http://www.cima.ky/search-entities>).

MPL is an exempted company incorporated in the Cayman Islands with limited liability. MPL provides management and administrative services to the Fund but is exempt from the requirement to obtain a licence under the Cayman Islands Securities Investment Business Law (as revised) and is not subject to regulation by the CIMA because it carries on securities investment business only for sophisticated persons and high net worth individuals. MPL has filed a declaration and registered with the CIMA accordingly (number 14505 <http://www.cima.ky/search-entities>).

THE DIRECTORS OF THE FUND HAVE DETERMINED THAT FROM THE MAY 2013 DEALING DAY AND UNTIL FURTHER NOTICE ALL REDEMPTIONS OF PARTICIPATING SHARES FROM ALL OF THE SEGREGATED PORTFOLIOS ARE SUSPENDED. HOWEVER, THE FUND IS STILL OPEN TO FURTHER SUBSCRIPTIONS INTO ANY OF THE SEGREGATED PORTFOLIOS AND WILL CONTINUE TO ISSUE NET ASSET VALUES DURING THE PERIOD OF SUSPENSION.

The Fund is not available for direct sale to members of the public. This document does not constitute an offer to sell or a solicitation of an offer to buy shares in the Fund. Subscription for shares in the Fund can only be made by completing the application form that accompanies the Offering Document.

Investment in the Fund will only be allowed on the basis of the relevant offering documents. Prospective investors should read the relevant offering documents carefully, including the risk factors, and take appropriate professional advice, including legal, financial and tax advice, before making any investment. Investment in the Fund may not be suitable for all investors.

Any past performance information presented is not indicative of future performance. Performance can go down as well as up. Due to the complexity of certain data points within this document a rounding formula of two or four decimal places may have been applied. Some of the information herein may contain projections or other forward looking statements regarding future events or future financial performance of countries, assets, markets or companies. These statements are only predictions and actual events or results may differ materially. Any geographic, political, economic, statistical, financial and exchange rate data may in certain cases be presented in approximate or summary or simplified form and may change over time. Any reference to any specific company, financial product or asset class in whatever way is used for illustrative purposes only and does not constitute a recommendation on the same. The performance shown in the graph is a representation of the Segregated Portfolio performance unless otherwise stated. While all reasonable care has been taken in preparing the material in this document, no warranty whatsoever is given and no responsibility or liability is accepted for any loss arising directly or indirectly in connection with or as a result of any person acting on any information, opinion or statement expressed in this document.

The material in this document has been prepared for informational purposes only and is subject to change without notice and is not intended to and shall not in any way constitute an invitation or an offer or be construed as a solicitation or offer, or recommendation to acquire or dispose of any investment or to engage in any other transaction. Nothing contained herein constitutes investment, legal, tax or other advice nor is it to be relied on in making an investment or other decision. You should obtain relevant and specific professional advice before making any investment decision. Potential investors should note that investments can involve significant risks. No assurance can be given that the investment objective of any investment product will be achieved. Investment in the Fund is currently available through 15 Segregated Portfolios, which are subject to differing rules as stated in the Fund's offering document, including in relation to minimum investment amounts, redemption rights and charges.

This publication is provided "as is" and MPL gives no warranties of any kind express or implied in respect thereof. Except as expressly set out herein, all warranties, conditions and representations expressed or implied by statute, common law or otherwise are hereby excluded to the fullest extent permitted by law. The matters herein are not directed at any person in any jurisdiction where (by reason of that person's nationality, residence or otherwise) the publication or availability of this publication is prohibited. The promotion and sale of collective investment schemes may be restricted in your jurisdiction. Persons in respect of whom such prohibitions apply must disregard all matters and information herein, do so on their own initiative and are responsible for compliance with applicable local laws and regulations; legal advice should be sought in cases of doubt.

### General circulation restriction

This document is not directed at any person in any jurisdiction where (by reason of that person's nationality, residence or otherwise) the document or availability of this document is prohibited. The promotion and sale of unregulated collective investment schemes may be restricted in your jurisdiction. Persons in respect of whom such prohibitions apply must disregard all matters and information in this document. Those who act upon information in this document do so on their own initiative and are responsible for compliance with applicable local laws and regulations. Recipients who are in any doubt should obtain appropriate legal and/or regulatory advice.

### UK circulation restriction

The Fund is a Cayman Islands-based unregulated collective investment scheme which is not regulated, authorised or otherwise approved by the UK Financial Conduct Authority ("FCA"). It is promoted by MPC, with registered address: Drayton House, Drayton Lane, Chichester, West Sussex PO20 2EW. Tel: 01243 785600. Email: [info@mpcfunds.com](mailto:info@mpcfunds.com) Web: [www.mpcfunds.com](http://www.mpcfunds.com).

This document is directed only at persons who fall within articles 19 or 49 of the Financial Services and Markets Act 2000 (Financial Promotion) Order 2005, including professional advisers who are authorised under the Financial Services and Markets Act 2000, other persons who have professional experience in matters relating to investments and institutional investors. The Fund is not available for direct sale to members of the public and nothing in this document is directed at, nor should be relied upon by, retail investors. This document is made available to FCA Regulated Advisers only within the UK.

### Cayman Islands circulation restriction

The Fund is not available for direct sale to members of the public. This document has been prepared for information purposes only and is subject to change without notice. It does not constitute and must not be construed as an invitation, offer or recommendation to the members of the public in the Cayman Islands to acquire or dispose of any interest in the Fund. For these purposes, 'public' does not include a sophisticated person; a high net worth person; a company, partnership or trust of which the shareholders, unit holders or limited partners are each a sophisticated person or a high net worth person; any exempted or ordinary non-resident company registered under the Companies Law (2013 Revision); a foreign company registered pursuant to Part 9 of the Companies Law (2013 Revision); any such company acting as general partner of a partnership registered pursuant to the provisions of the Exempted Limited Partnership Law (2014 Revision); or any director or officer of the same acting in such capacity or the Trustee of any trust registered, or capable of registering, pursuant to the provisions of the Trusts Law (as Revised). Subscription for shares in the Fund may be made only by completing the application form that accompanies the relevant offering document.

### Data Protection

MPL informs you that any personal data given to us will be registered on file for the purpose of, and not limited to, sending promotional or informational material regarding its products or services that you may be interested in. MPL takes full responsibility for the protection of your personal data. You may exercise your rights to oppose the processing of your data by writing to the following email address: [info@managing-partners.com](mailto:info@managing-partners.com).